

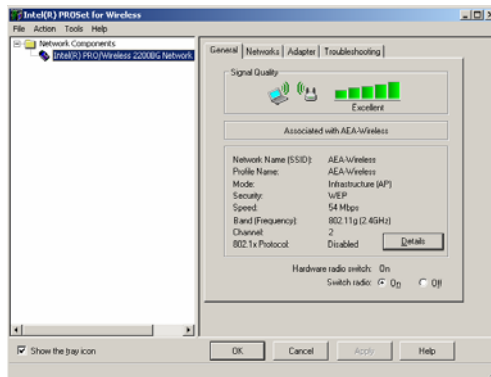
Wireless Networks

AEA laptops support wireless networking using a software called Intel ProSet for Wireless. The laptops can be used on any available wireless network. Each AEA office provides wireless network service using a profile which allows the user to roam between AEA offices without making changes to their wireless adaptor settings. If you are connecting to a different wireless network, there are specific instructions you will need to follow to create a new wireless connection or profile. Once the connection is created, it will always be available to you.

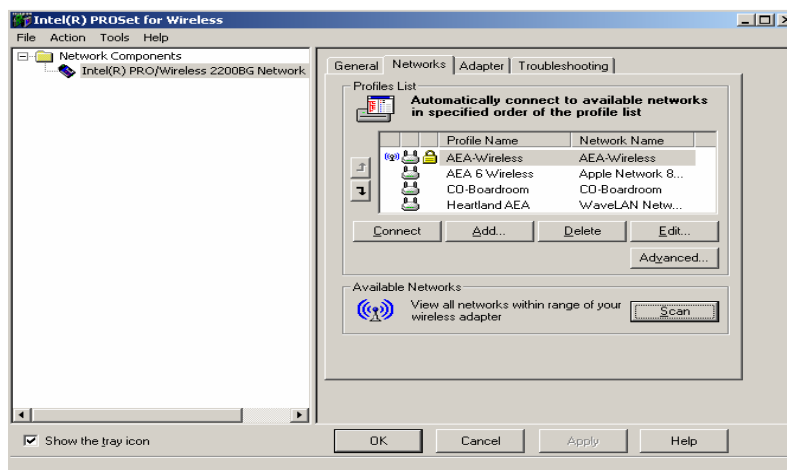
1. To begin, select the icon in your tool bar that represents the Intel ProSet wireless interface. The icon looks like the one shown below. To open the icon, either double-click or right-click and choose Open.



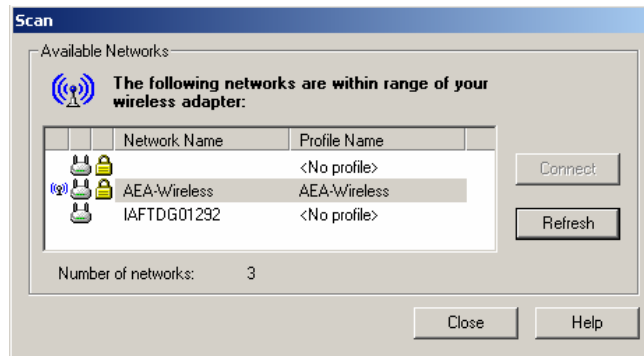
2. The Intel ProSet window will open and you will be greeted by a Window that looks similar to the one shown below. The initial window shows a *General* tab which shows your connectivity status. If you are attaching to a Prairie Lakes AEA office network, this connection will automatically be created. You do not need to open this window and you do not need to make additional changes to your wireless software.



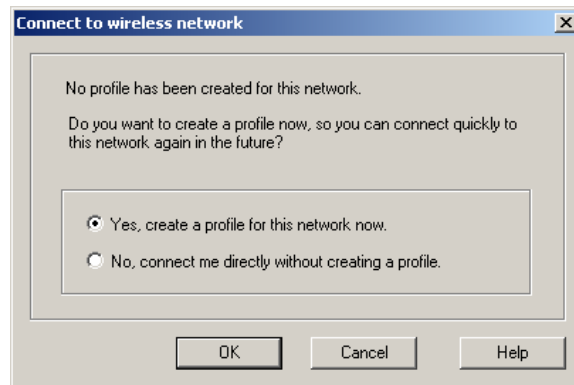
3. To attach to a new or different wireless network, you must click on the *Network* tab of the Intel ProSet window. You will see the following window:



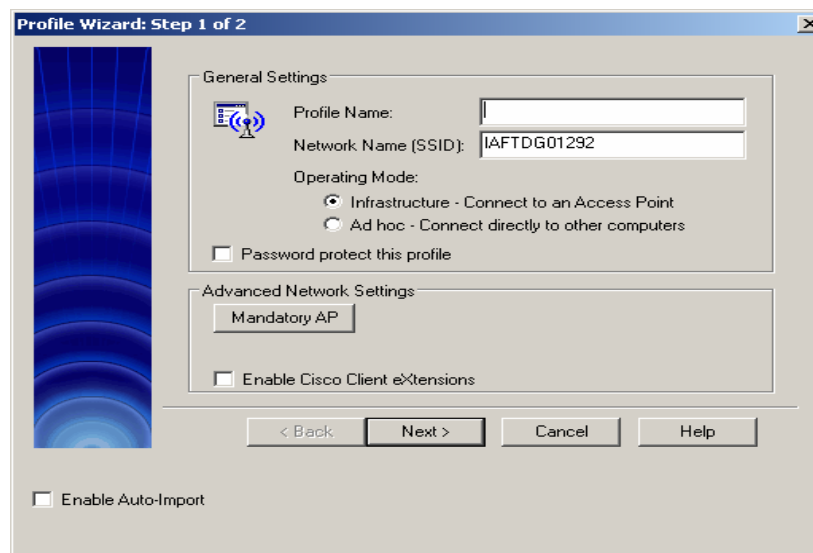
- Click the *Scan* button to allow the computer to scan for available network access points. The names of available access points will appear.



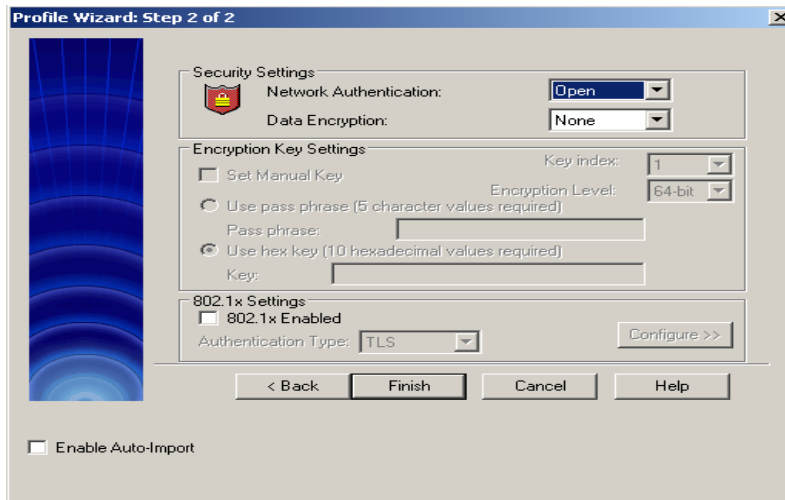
- Select the access point you wish to connect by highlighting its name and click the *Connect* button. You will see a message indicating no profile currently exists for this network. You can choose to create a profile so that the computer can automatically connect to this network in the future. In this example, we will create a profile by clicking *OK*.



- Type a name that describes your profile. For example, Marriot Hotel – Des Moines or Spirit Lake Elementary School. This will allow you to easily find your profile if you need to use it in the future. Leave all other settings the same and click *Next* to continue.



7. You will see the following window. Click Finish to complete the setup of the new profile.



8. Once the profile is created, your computer will attempt to connect to the network. When you return to this site, the connection will automatically be created for you. If the connection is unsuccessful or needs to be “forced”, simply highlight the name of the network you wish to connect to and click the button titled *Connect*. To verify the connection was successful, click the General tab and you should see the status for your connectivity reflected in the *Signal Quality* area of the window. Click *OK* to close the window and begin working on the network.

